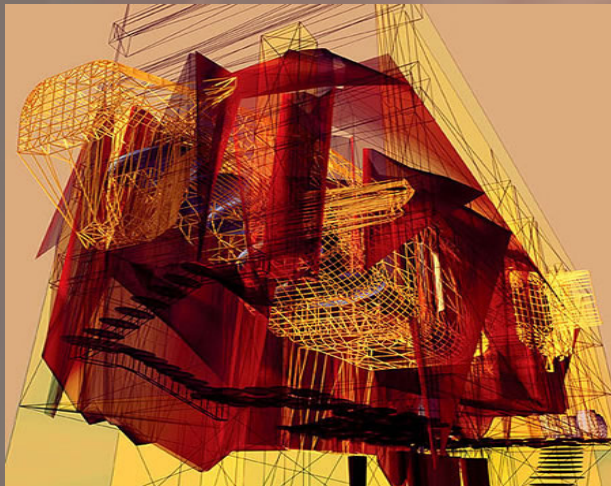


ARCHITECTURE COMES ALIVE



Neo-Plasmatic Design takes its inspiration from science-fiction, employing semi-living materials or entities to explore the impact of emerging and progressive biological advances upon architectural and design practice. As such, architecture is no longer confined to conventional dead matter (timber, concrete, steel, etc.) Neo-Plasmatic design manipulates actual biological material and takes a multi-disciplinary approach, combining architecture with biology, microbiology, biotechnology, medicine and surgery.

Figures like Marcos Cruz and Rachel Armstrong, both at Bartlett, are researching metabolic materials to develop more dynamic and environmentally-integrated materials. This would confer properties of living systems on buildings and cities, enabling architecture to change over time using local sources of energy and raw materials and respond to variations in the urban environment.